

WHEREWITHAL CONSULTING - WHC



High Quality Solutions



*Detailed Engineering, installation, and supply of equipment for
Pharmaceutical, Veterinarian, Chemical, Food and Cosmetics
Industries.*

Wherewithal Consulting - WHC

Ph: +34 606.975.818

jamat@tausing.com

www.tausing.com



- WHC is a company consisting of professionals with more than 25 years of experience and specializing in offering a global service for the design, implementation and execution, or remodeling of installations. Its services range from supplying process equipment up to carrying out turn key projects.
- To this objective, we dedicate our professional team that integrate our firm and that is made up of a group of dynamic and heterogeneous professionals with extensive experience in the fields where the company specializes: Pharmaceutical, Chemical, Veterinarian, Food and Cosmetics.



COMPANY PRESENTATION

- WHC is a company that developed with the willpower to meet the requirements of the pharmaceutical, chemical, veterinarian, food, and cosmetics industries, providing continuous improvements and innovative solutions in the wide spectrum of production units.
- WHC is a Spanish company specialized in the design, supply, mounting of equipment, and pharmaceutical installations according to the latest international norms “G.M.P.”.
- WHC originated as a manufacturer of process machines, generally designed according to the requirements of each client, and our activity as an engineering company is centered basically on providing services for our products.
- Following preceding premises, WHC has developed consequently with the emerging requirements, market demands, technological aspects, economy and norms and has developed a parallel progressive strategy of internationalization that took us beyond Spanish and European markets, but as well as African and south American markets.



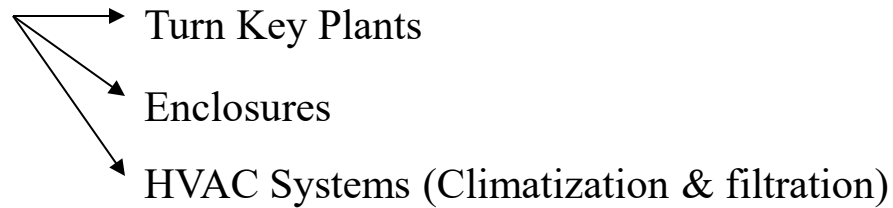
COMPANY PRESENTATION

- Subsequently, with incorporation of the GMP norms in all Europe, we became specialized in applying them and we expanded our activities of machine fabrication to supplying complete laboratories (machines and installation), remodeling of installations that do not comply with the norms, and complete engineering jobs.
- Also, we have created a new department to execute complementary jobs as *DQ* (Design Qualification), *IQ* (Installation Qualification), *OQ* (Operational Qualification), FAT (Factory Acceptance Test), SAT (Site Acceptance Test) and supporting documents required for validation.
- WHC has specialized in offering global services for the design, implantation and execution, or remodeling installations, areas, or complete production plants. Our services covers the supply of process machines up to carrying out turn key projects.
- WHC is pleased to form part and contribute to the development, side to side with its clients, of these important sectors for the human being such as pharmaceutical, chemical, cosmetics, and food industries which call us together to accept the challenge with more demands every time and to face what the future has for us.

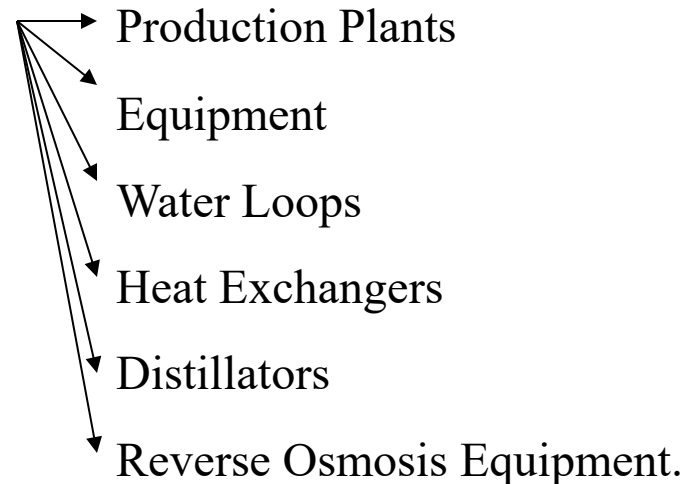


RANGE OF PRODUCTS

Lay-Out:

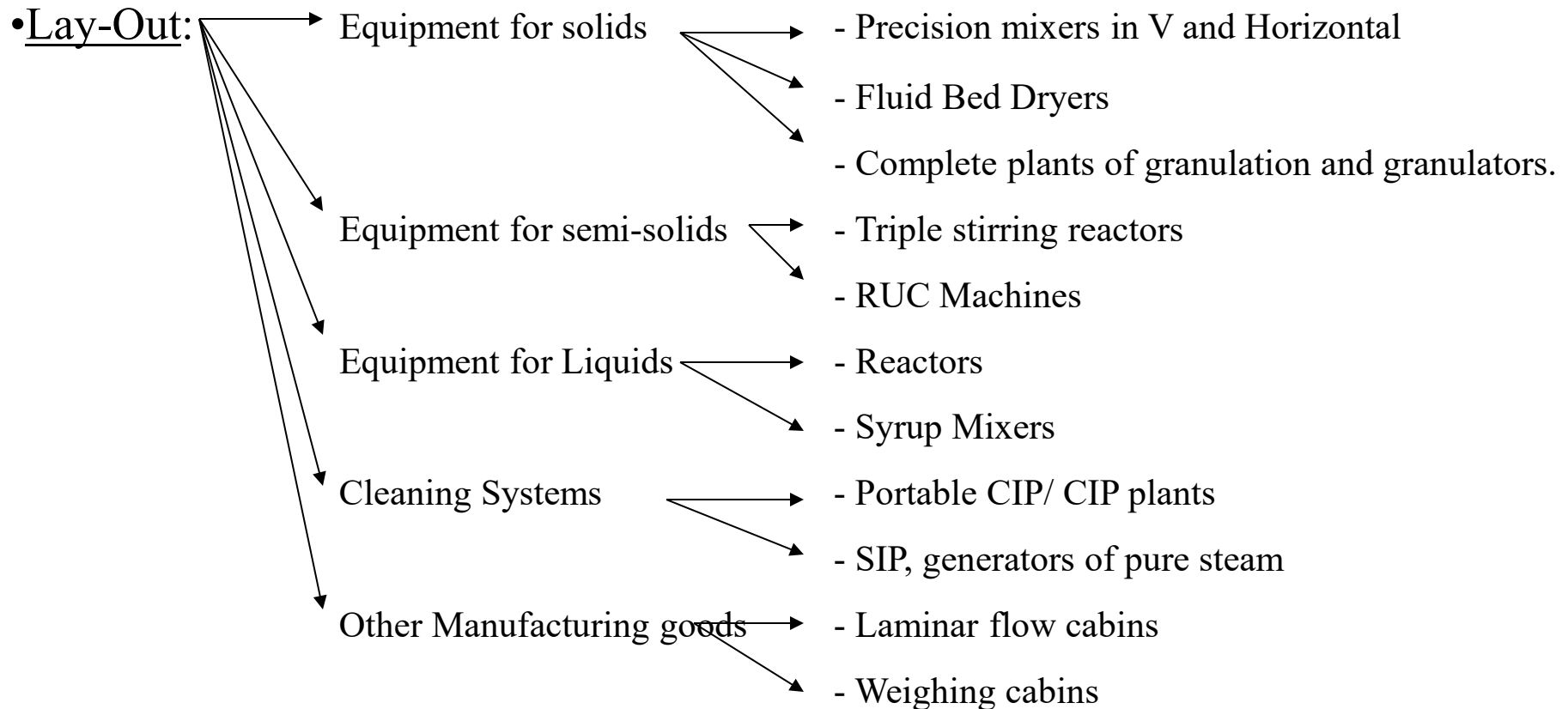


Treatment of WFI y Purified water:





RANGE OF PRODUCTS



- Engineering and Services
- Pre project engineering
 - Projects
 - Services Engineering
 - Validations
 - Audits
 - Protocols



LAY-OUT

- Turn Key Plants”

WC . Offers a specialized service for the design, implantation, execution, and remodeling plants, areas, and complete production plants.

- White Rooms (Enclosures)

- Partitions

- Windows

- Ceilings

- Lighting fixtures

- Floors

- HVAC systems (climatization and filtration)

WC carries out installations of AIR for fabrication processes in accordance with the requirements of Good Manufacturing Practices or GMPs.

- Validable designs of sterile areas, solids, liquids, biological, etc.

- Equipment appropriate for validation, test DOP, temperature, humidity, etc.

- Additional Supply of IQ, OQ, PQ and validations

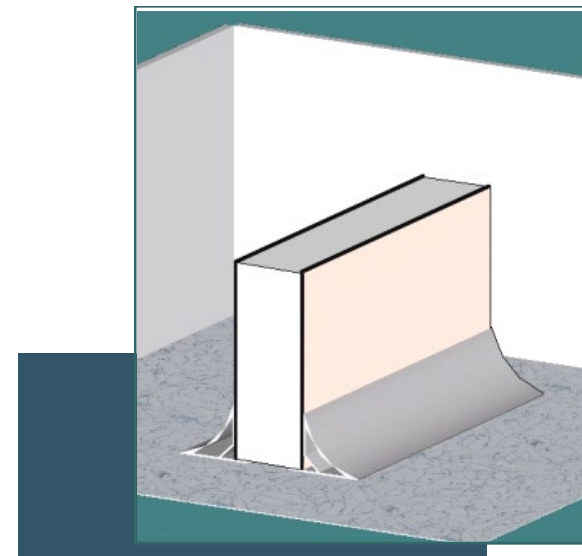
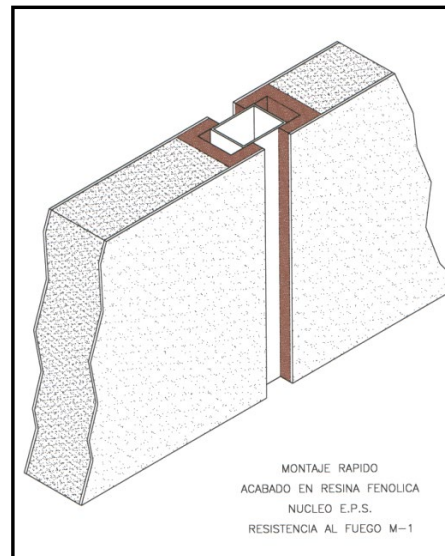


LAY-OUT

Enclosures



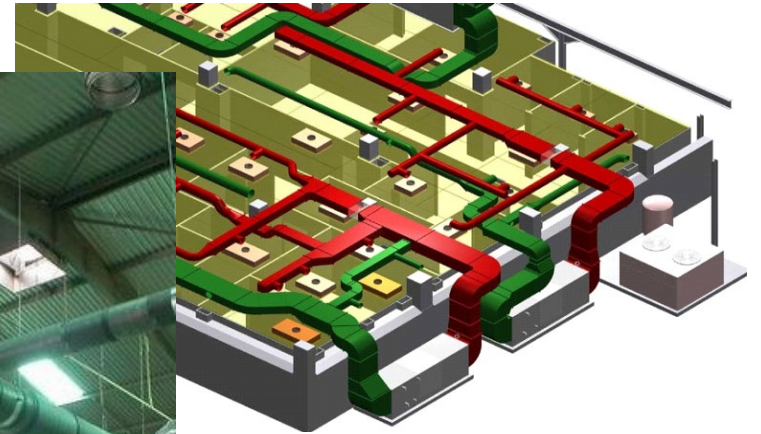
Corridor and hall of production where the impeccable finish achieved after the execution of the laboratory with self supporting materials, sheet in phenolic resin.





LAY-OUT HVAC (Air Systems)

Air Treatment Units

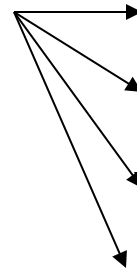




WATER TREATMENT

WHC offers a wide range of products for water treatment processes, from production plants to equipment, a multitude of options adapting to the specifications of the client.

- WFI water, for injectables:



WFI water plants

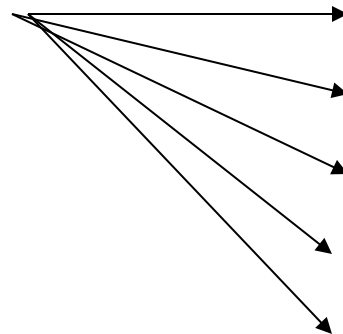
WFI water equipment

WFI water loops

Heat exchangers

Distillators

- Purified Water:



Purified water plants

Purified water equipment

Purified water loops

Heat exchangers

Reverse osmosis Equipment



WATER TREATMENT



Pure Steam Generators,
Steam in Place (S.I.P.)

Production of water for
injectables by distillation
or bi-distillation.



EQUIPMENT

WHC manufactures high technology equipment, subject to verification tests before they are delivered (FAT).

- EQUIPMENT FOR SOLIDS

Precision Mixers in V, Fluid Bed Dryers

Horizontal Mixers, Granulation Plants, Granulators

- EQUIPMENT FOR SEMI SOLIDS

Triple Stirring Machines, High Viscosity Reactors

RUC equipment, universal reactors for emulsion

- EQUIPMENT FOR LIQUIDS

Reactors

Syrup Mixers

- CLEANING SYSTEMS

CIP plants, *Clean in Place*, *Portable CIP*, SIP, Pure Steam Generators, *Steam in Place*

- OTHER EQUIPMENT

Laminar Flow Cabins

Weighing Cabins

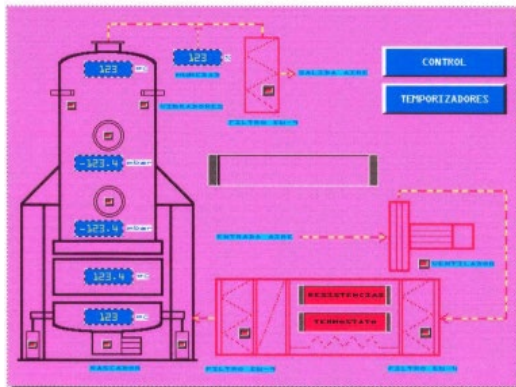


EQUIPMENT

Reactors



Información de la pantalla 2001/10/10 18:02 BI
Nombre del Proyecto SEC.FERIA.psv
Pantalla BI PRINCIPAL
Pantalla de Imagen



Complete Plant of Granulation and Drying



EQUIPMENT



Granulator

Ruc and Fusor for
pharmaceutical/Cosmetic
production



Universal Reactor
(creams,
toothpastes,...)



ENGINEERING AND SERVICES

- Pre Project

feasibility Study, filtering and unifying criteria with the client and gathering information on site at the plant, Lay out execution, flow diagrams, technical specifications and carrying out a previous economical study.

- Projects

WHC is specialized in turn key projects.

- Services Engineering

Within the process of execution of a project, WC carries out the development and management of the project, starting from detailed engineering and services which carried out by the engineering department and in collaboration with the client.

- Validations

All products offered by WHC are delivered with corresponding documentation necessary for validation. Also documentation of IQ, OQ, FAT y SAT to the equipment are done.

- Audits

WHC carries out quality audits of all products and all installations confirming the completion of good manufacturing practices or GMPs.

- Protocols

Standardized work procedures or PNT's, Cleaning protocols, Validation protocols, etc



WHC AROUND THE WORLD



Clients/Representatives/
Associates



Our Partners,

- Air Treatment, Laminar Fluids,
Enclosures. Turn-Key Projects
(www.cleanroomsystem.es)

- JG Ingenieros
Specialised construction engineering
(<https://www.jgingenieros.es>)

-Inspection Machines, Bottles ,
Ampoules, Vials
(www.cmp-pharma.it)

Wherewithal Consulting - WHC

Ph: +34 606.975.818

jamat@tausing.com

www.tausing.com